

Solution Guidebook:

Lenovo Display Control Center - ThinkColour

A software tool that facilitates a complete and efficient user experience for ThinkVision monitors

ThinkColour

2022 Lenovo Internal. All rights reserved.

Smarter
technology
for all

Lenovo

Why ThinkColour for **display solutions**

ThinkColour is a software developed based on the **Lenovo Display Control Center** platform, offered on a range of select models of ThinkVision monitors within our diverse portfolio. Easily enhance and customize your visual experience with ThinkColour.

ThinkColour offers comprehensive display management to maximize productivity, from simple adjustments between sources, to specialized color-critical settings for uncompromising quality of work, to easy monitoring and control to ensure efficiency and security - ThinkColour gives you complete control of your display and how you choose to work.

Lenovo is known worldwide for quality and innovation.

We have led the industry in the adoption of standards to support eye health, continually pushing the envelope through purposeful design and relentless innovation, to offer user comfort through ThinkColour.



ThinkColour

2022 Lenovo Internal. All rights reserved.

**Smarter
technology
for all**

Lenovo

**ThinkColour features may vary depending on monitor model type.*



Many small business with leaner teams often do not have the resources for professional IT support, while small-and medium-sized enterprises (SMEs) represent over 90% of the business population.¹

ThinkColour

2022 Lenovo Internal. All rights reserved.

The **modern workforce** today faces a brand-new era of extended screen time and a **digitally interwoven ecosystem** that is heavily reliant on IT knowledge to facilitate day-to-day tasks. To maintain high levels of self-sufficiency, businesses require accessible tools without sacrificing employee time or health.

- New research shows that average screen time is now more than **13 hours** per day²
- Over **50%** of people who work in front of a computer screen experience digital eye strain³

90%
of business
population are SMEs
with limited IT

50%
of people
suffer from
eye strain

55%
of workday
time wasted

The drastic increase in device-use has led to the need for employees to manage IT tasks on their own, as calling IT interrupts their workflow and can create a bottleneck for overall productivity.

- Top IT requests include mundane tasks such as “my shortcuts are missing” or “on-screen text is too small”⁴
- Enterprise workers spend **12%** of their time on admin tasks and only **45%** of their time performing primary job duties⁵

1 – [World Trade Organization](#)

2 – [Nielsen/Eyesafe](#)

3 – [YourSightMatters](#)

4 – [teamviewer](#)

5 – [TheStateofEnterprise](#)

Smarter
technology
for all

Lenovo

Why **install now**

With the rapid shift to **flexible working** accelerated, IT departments everywhere have needed to quickly deploy technologies to **maintain business continuity**.

Given the influx of remote workers off-site, IT managers face new dynamics and **a rising demand** for remote asset management.

Companies are also increasing investment in and upgrading outdated infrastructure as an imperative.

ThinkColour

2022 Lenovo Internal. All rights reserved.

At least 40% of employees will continue working remotely, making remote asset management a top priority for IT ⁶



6 – [computerweekly](#)

**Smarter
technology
for all**

Lenovo

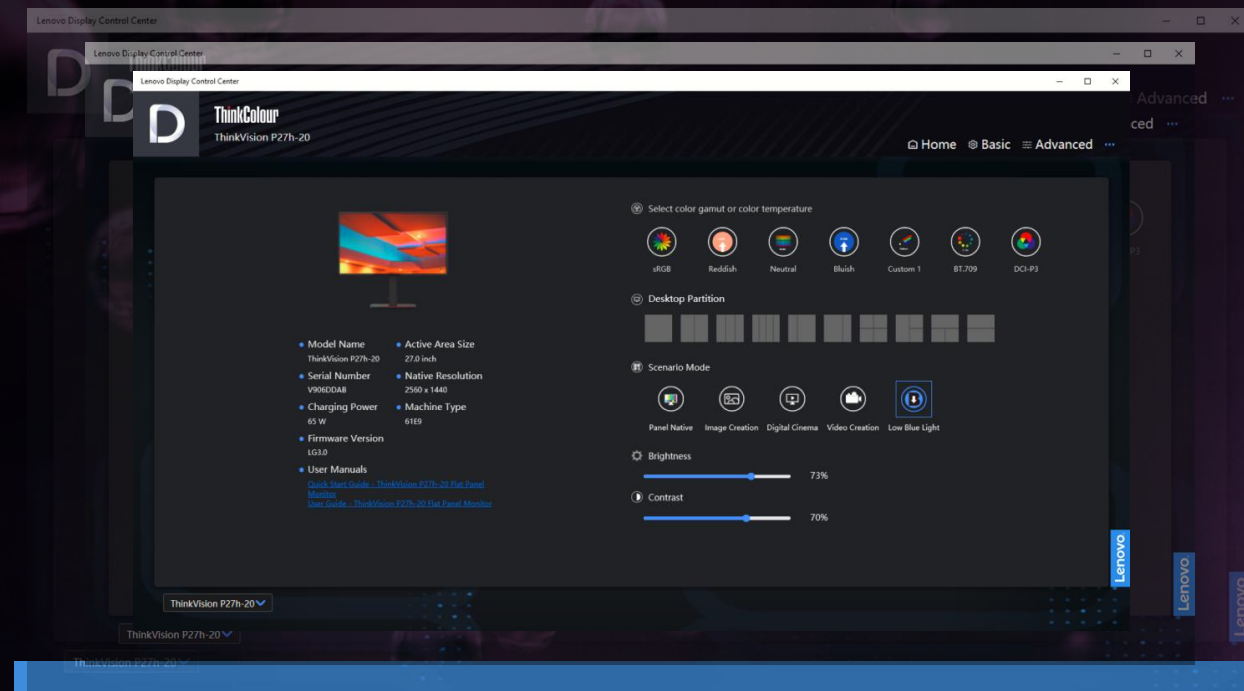
ThinkColour an effortless, user-centric software

Display software is an integral part in utilizing a monitor's full range of capabilities.

ThinkColour is a one-stop tool to further enhance and elevate your user experience with our innovative **ThinkVision monitors**, providing premium and exclusive features and functions that empower users with intuitive tools to **maximize productivity** in the workplace.

Designed to be easy to understand and use, ThinkColour is a graphical interface for quick **control** of display attributes, **accurate** and **easy** color setting and calibration, simple management between sources, and utilities for better and smarter functionality.

Enhanced **ergonomic features** prioritize user health and optimize viewing comfort.



ThinkColour provides a *simple yet intuitive* interface for full control of your monitor...

...without the need for extensive IT support for set-up. With its remote management capabilities which are supported by third party central management solutions such as Microsoft Endpoint Manager, IT managers are also better equipped to ensure that assets are secure and monitored, no matter where their employees are located.

Customer pain points



IT Managers



Everyday Employees



Advanced Users



Everyday Employees

- **Complex setup** that requires IT support
- **Difficulty changing settings** or making quick adjustments
- Cluttered desktop **limits productivity**
- **Eye strain** over prolonged use



Designers, Editors & Advanced Users

- Inaccurate, sub-standard **color display**
- Limited options for display **customization**
- Need to change resolution or color settings with **ease**
- Need to manage a **multi-screen setup**
- **Time wasted** re-adjusting settings or profile on different monitors uses



IT Managers

- Inability to remotely manage monitor fleet
- **Time wasted** on manual monitoring and reporting
- **Complicated** process for batch adjustment
- Need to **streamline** work with auto installation and updates

What ThinkColour offers



CREATING THE IDEAL WORKPLACE *for everyday employees*

- Simplify the set-up
- Personalize your settings and make quick adjustments
- Multi-task easily with multiple screens

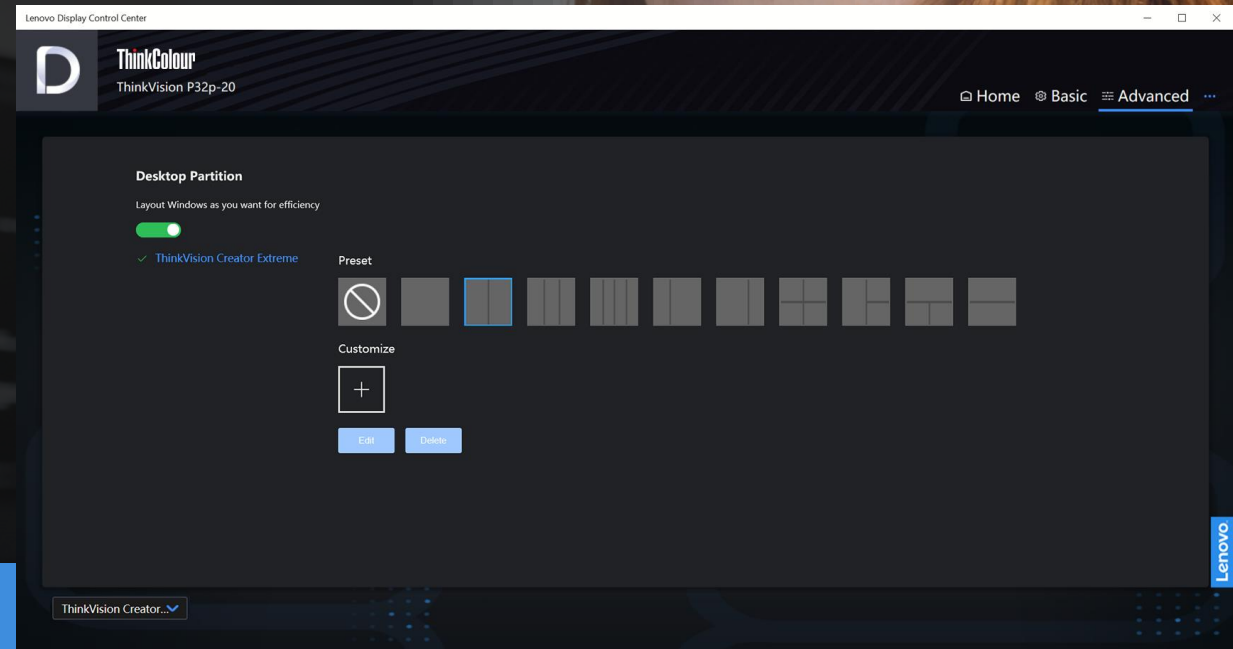


OPTIMIZING THE VIEWING EXPERIENCE *for advanced users, editors, or designers*

- Higher performance and customization
- color correction and calibration
- Create and save multiple scenarios for different use cases

ThinkColour

2022 Lenovo Internal. All rights reserved.



MANAGING THE MONITOR FLEET* *for IT managers*

- Facilitate information gathering and reporting
- Remote asset management*
- Maximize efficiency, control multiple monitors

**this function is supported by third party central management solutions such as Microsoft Endpoint Manager*

Lenovo

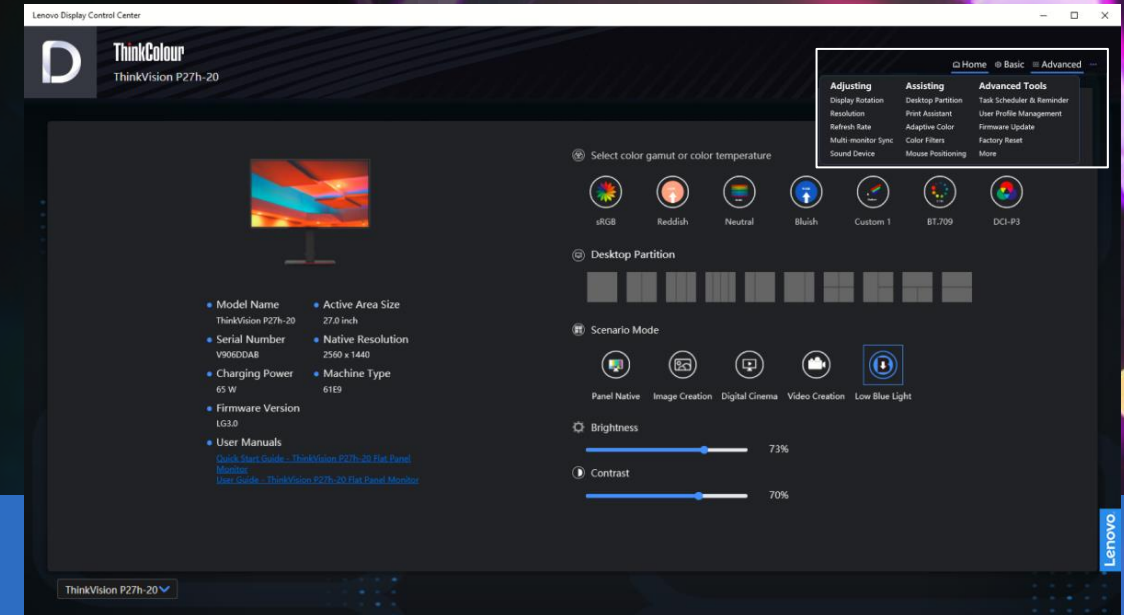
ThinkColour a powerful, smart display software to maximize efficiency and productivity



SIMPLE INTERFACE FOR EASE OF USE

ThinkColour is designed to simplify the user experience, without compromising quality and reliability of work.

- Basic to Advanced Settings for display adjustments or assistance found on home page
- User-friendly interface that is easy to understand
- Accessible manual ensures any employee can fully utilize software capabilities



Intelligent functions for productivity

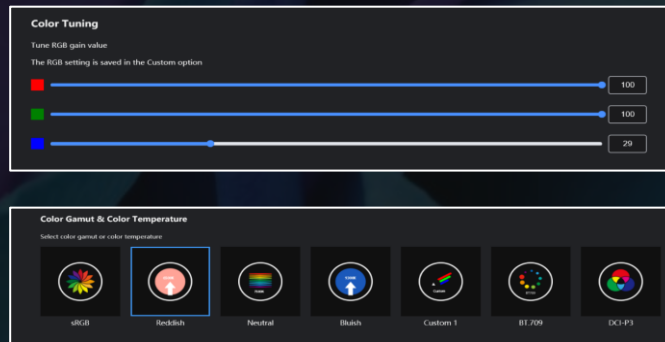
ThinkColour is smarter technology that 'Thinks' for you – learning from common use patterns to become your personal assistant.

From its powerful desktop partitioning, PiP/PbP, Mouse Positioning, Task Scheduler, and other intuitive functions, its features are designed to streamline workflow and achieve multiple tasks with ease.



EASY COLOUR ADJUSTMENT

ThinkColour helps users see true color with the ability to customize color gamut & temperature, gamma, RGB gain, and color tuning for full creative control.



ENHANCED ERGONOMIC FEATURES

ThinkColour does not compromise health – its low blue light mode ensures maximum comfort and eye health over prolonged periods of use.

An optional reminder prompts users with adjustment options so you're never in the dark about your screen time.



REMOTE ASSET MANAGEMENT AND SECURITY

ThinkColour offers the tools enabling IT managers to manage assets remotely via the control and support of third party central management solutions such as Microsoft Endpoint Manager. This powerful software ensures seamless collaboration between devices of your desktop or office ecosystem.

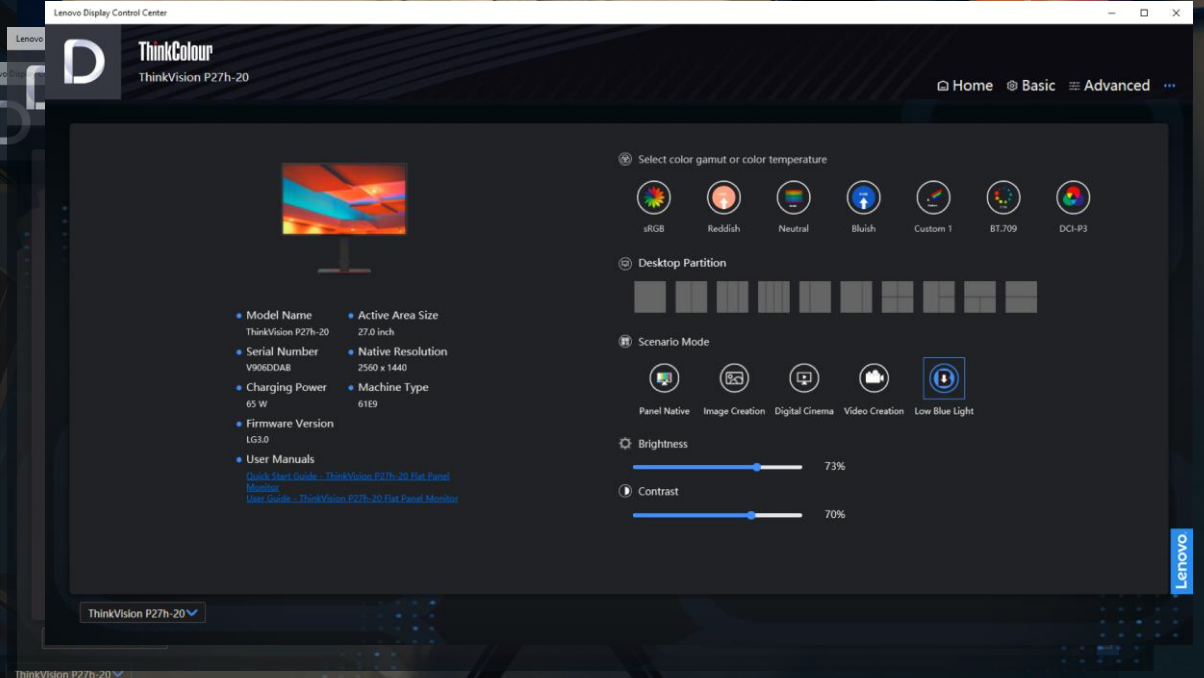
Display software that **simplifies your work**

The graphical interface of **ThinkColour** is designed to be simple and easy to use, so users can skip a lengthy IT session or training to create their personalized setup.



ELEVATE YOUR DISPLAY EXPERIENCE WITH **EASE**

- Find basic info and user guide at ThinkColour home page
- Access hot features and navigator to update and change features
- Auto match with the default language of your OS (supports 33 languages)
- Make easy adjustments by mouse (brightness & contrast, video source, scenario modes, volume control, USB charging, and more)
- Firmware update option





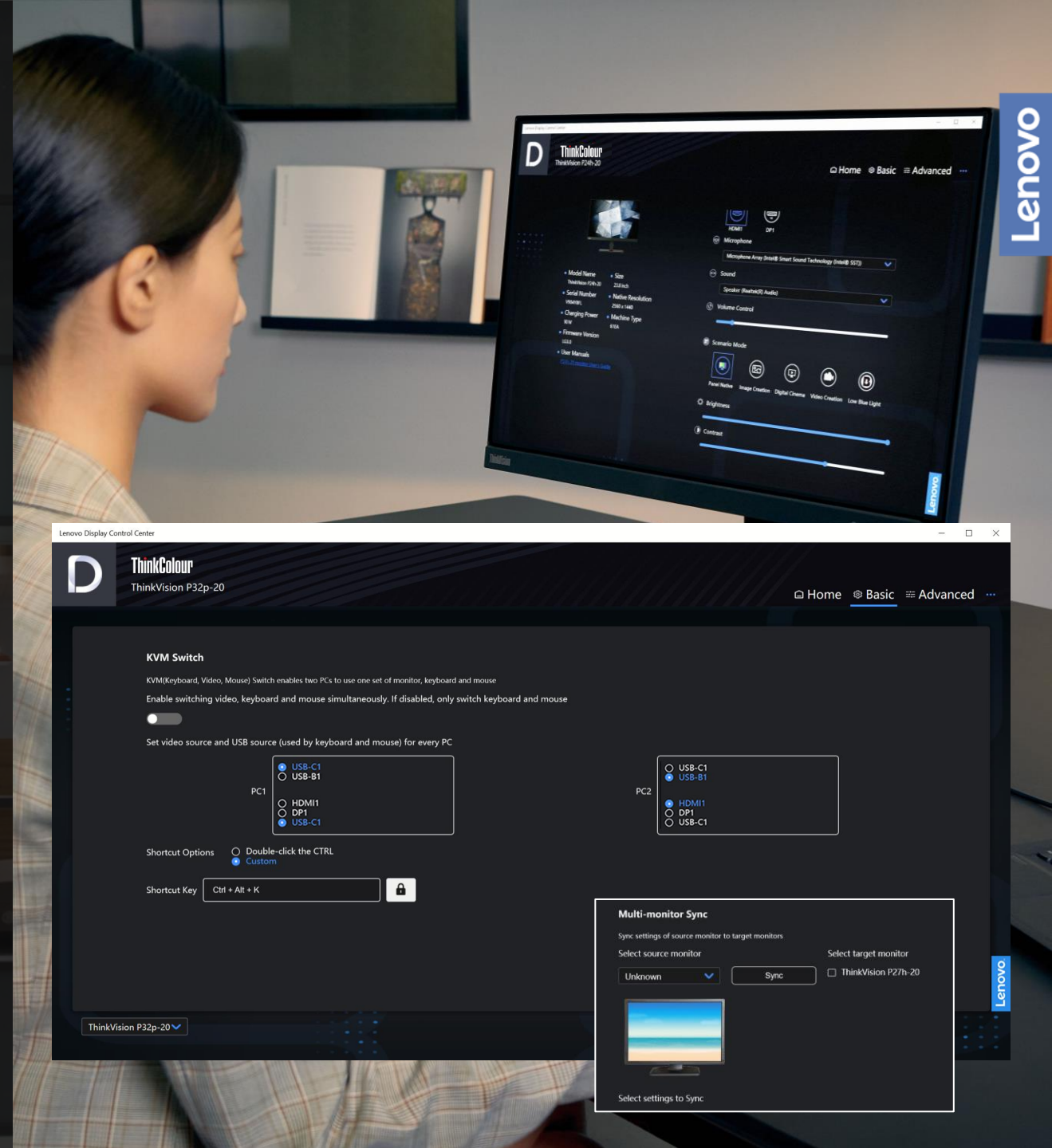
MULTI-TASKING MADE SIMPLE

- Effectively layout your task Windows with Desktop Partition
 - Set partitions crossing multiple monitors
 - Drag app window and put into desired destination window
 - Place app window into partition crossing multiple monitors
- Set the Picture-in-Picture and Picture-by-Picture (PiP/PbP) with simple clicks, for multiple sources
 - Move PiP anywhere and resize window
 - Set PbP to view two windows side by side
- Easily apply configuration to multiple monitors with Multi-monitor Sync
- Automatic Cross Screen function – automatically move mouse cross border from one screen to another



COLLABORATION TOOLS

- KVM Switch Enables two PCs to use one set of monitor, keyboard, and mouse
 - Switch video, keyboard, and mouse simultaneously
 - Set video source and USB source for every PC
 - Custom shortcut options or double-click CTRL



Display software that simplifies your work

ThinkColour is designed to better understand and prioritize user needs and preferences, so you can spend more time focusing on the tasks at hand.



SOFTWARE THAT LEARNS AS YOU USE

- ThinkColour's self-learning UI acquires from user pattern and preferences while maintaining user privacy and security, then **automatically helps prioritize** frequently used hot features by displaying them on the home page for quick access
- Work undisturbed – ThinkColour doesn't disrupt your workflow with messages or notifications, and alerts can be turned on or off

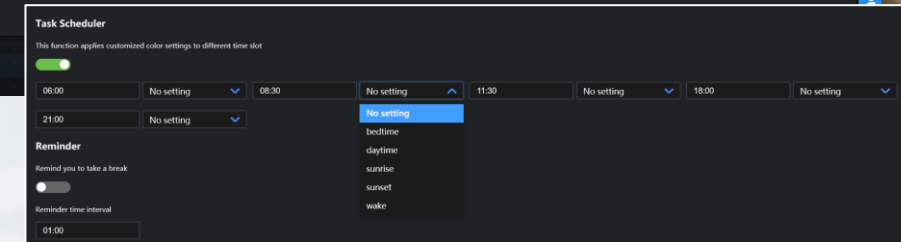
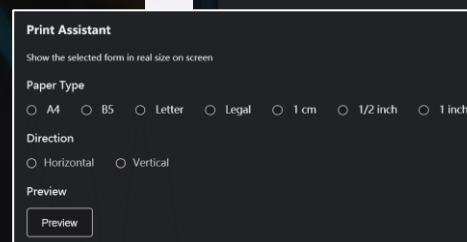


TOOLS FOR ASSISTANCE

- Mouse Positioning function - locate your mouse with a 'shake'
- Print Assistant
- Task Scheduler
- Automatic changes to display settings based on saved profiles and set times

ThinkColour

2022 Lenovo Internal. All rights reserved.





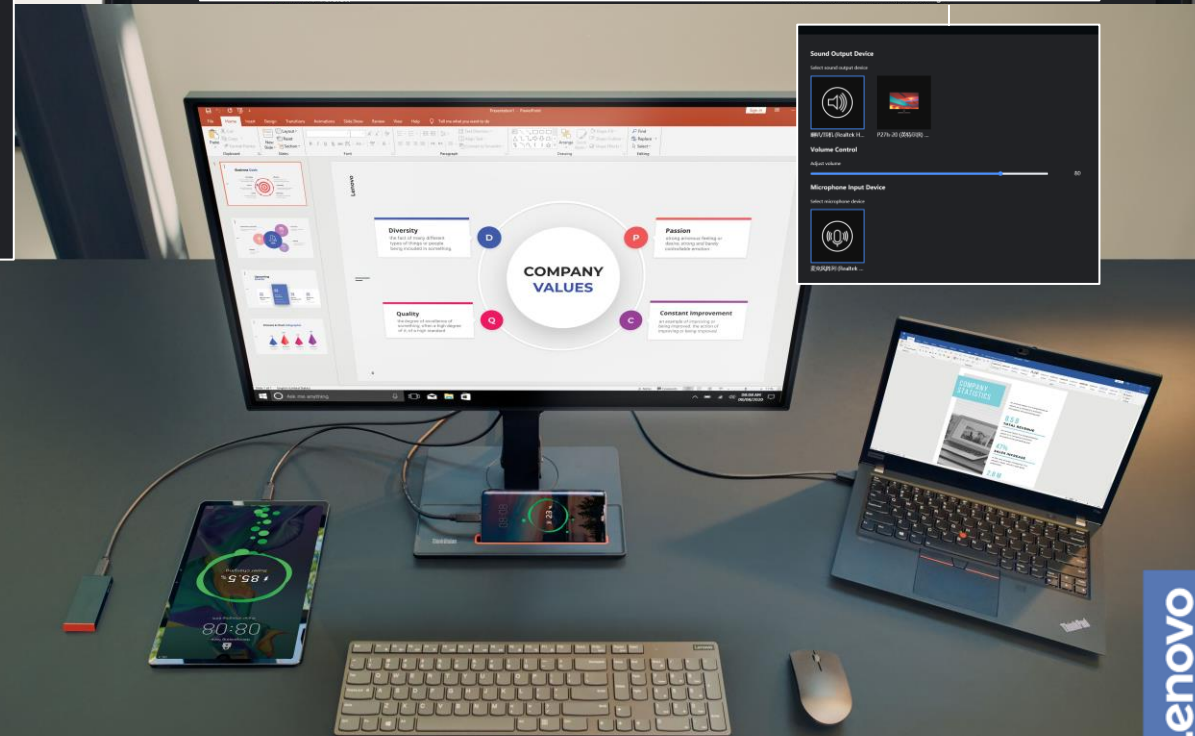
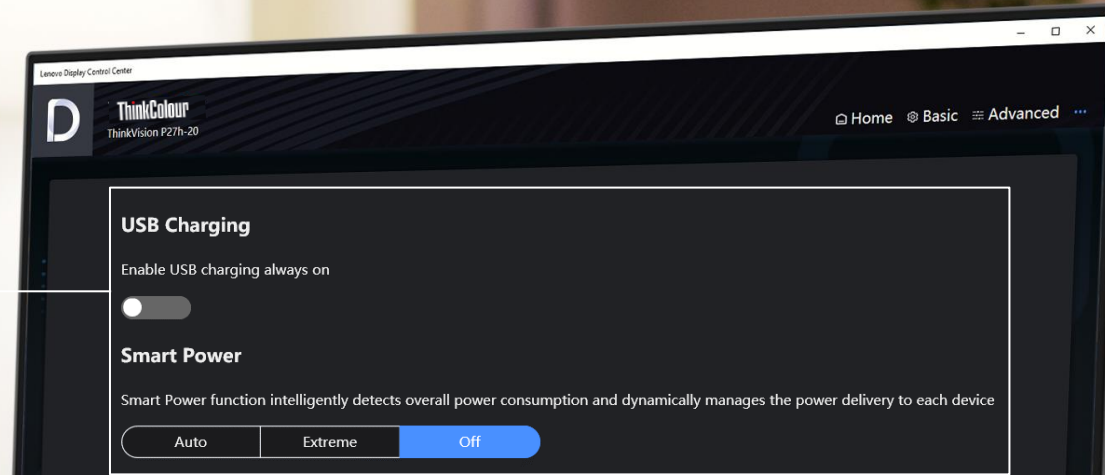
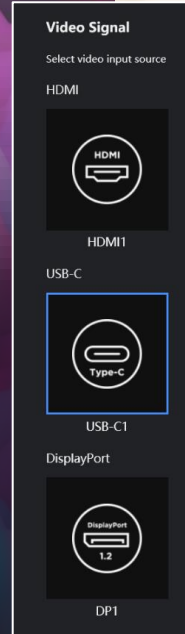
CUSTOMIZE YOUR DISPLAY

- Save settings to your PC, apply, import, and export User Profiles to other PCs with ThinkColour
- Set shortcut keys for often-used functions
- Customize hot features displayed on home page
- Easily adjust resolution, refresh rate, and response time



SMARTER FUNCTIONALITY

- Intelligent functions for power management
 - Smart Power function helps manage and optimize device charging
 - Smart Energy automatically lights up the monitor with your presence
 - Energy Saving Mode helps lower costs
- Sound Redirect ensures that audio goes to the right device



Complete control of your **color palette**

ThinkColour can help users whose jobs depend on color-critical settings, ensuring uncompromising quality and reliability for their work.

Never miss a shade, while ensuring full control of your display elevates your work to next level efficiency.



EASY COLOUR ADJUSTMENT

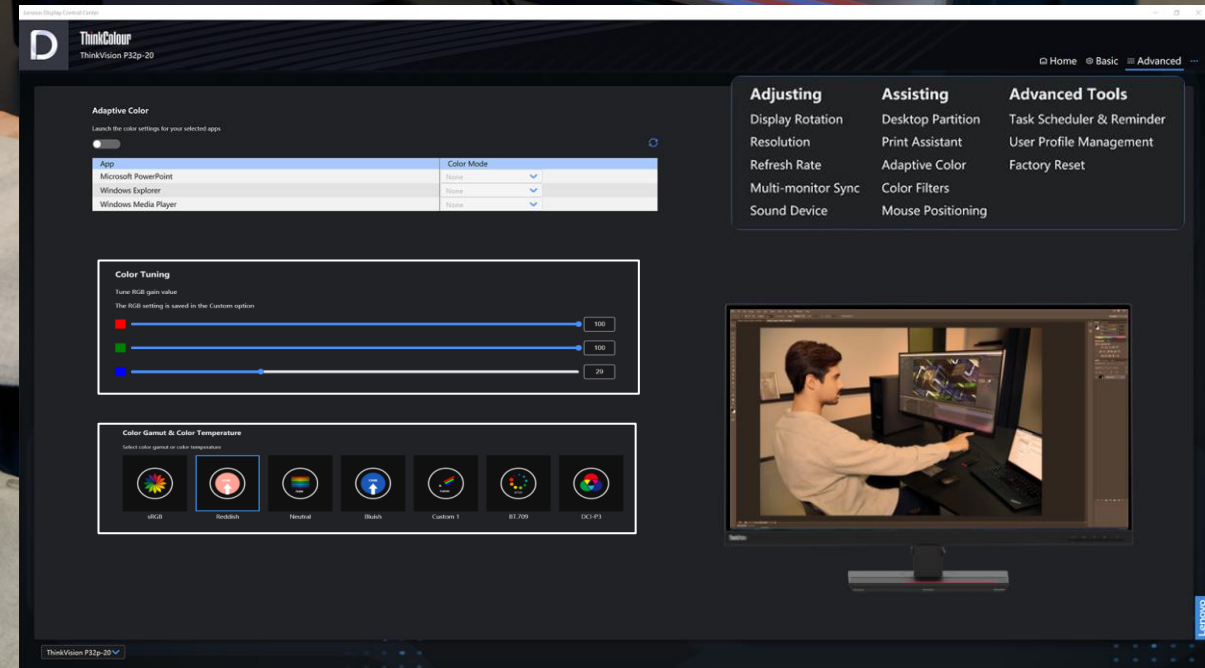
- Multi-color gamut & color temperature, color tuning, gamma, RGB gain, temperature customization
- User-customized modes
- Adaptive color function to auto-match color settings on different applications or tasks
- Real-time adjustment to fine-tune colors with just your mouse
- HDR mode for more realistic visual effects

ThinkColour

2022 Lenovo Internal. All rights reserved.



Lenovo



Enhanced for **healthy working**

ThinkColour puts the user first with enhanced ergonomic features to ensure a healthy working environment over prolonged periods of use.



EYE-HEALTH PROTECTION

- Low blue light mode reduces eye strain
- Health Reminders prompts user to take a break at set time intervals and can be switched on/off
- Color Filter function changes the colour settings that make the display easier to see for those with colour weakness or blindness

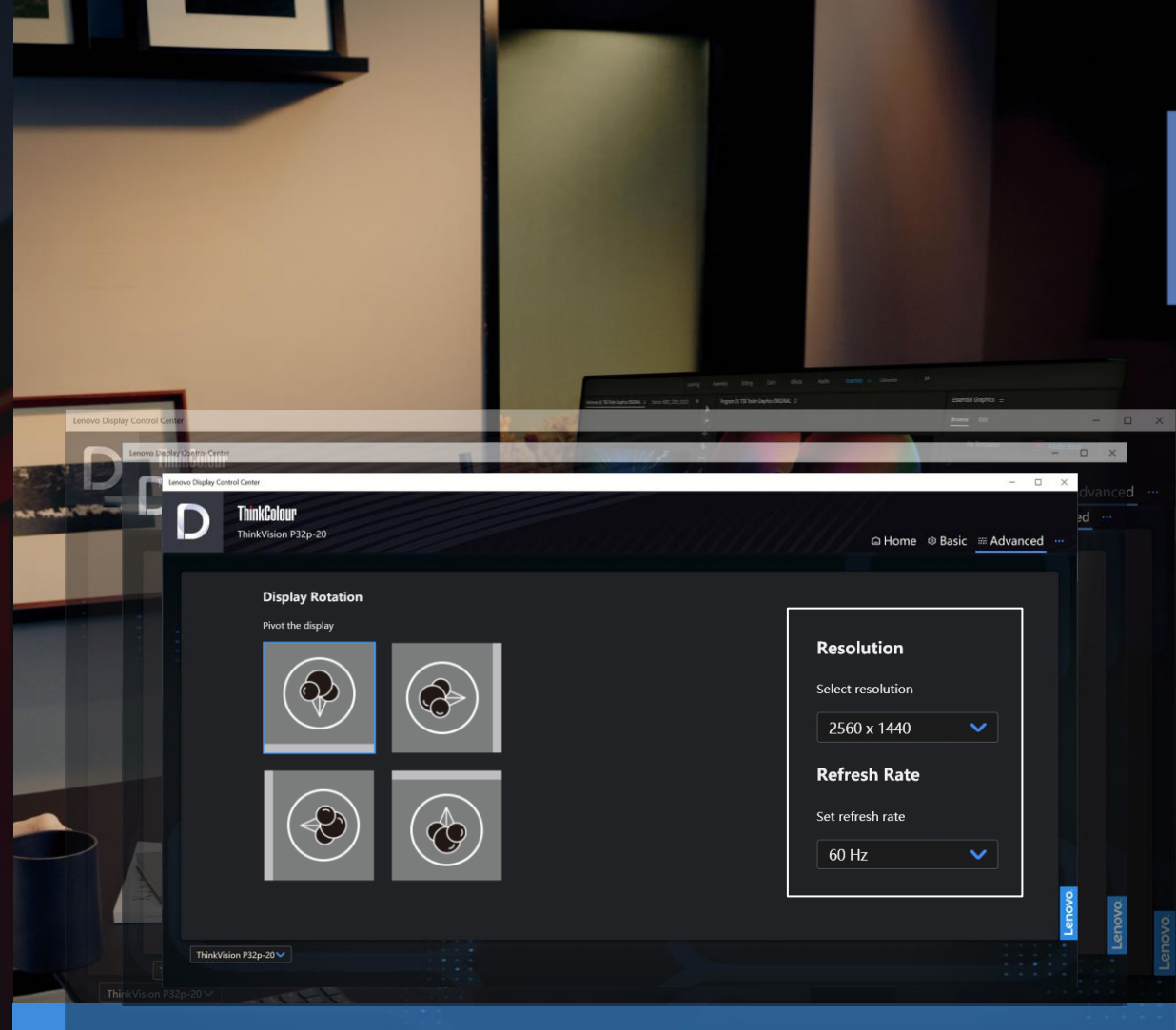
Color Filters

Make photos and colors easier to see by applying a color filter to your screen

[Go to Color filters](#)

ThinkColour

2022 Lenovo Internal. All rights reserved.



GET THE PERFECT ANGLE

- Rotate the Monitor with ONE click – find what suits your posture or usage scenario

Lenovo

Remote asset management for **IT managers**

ThinkColour offers a **smart, secure, and efficient** asset management platform* designed for remote working or managing many monitors in a large office.



STAY SECURE, FROM ANYWHERE

- Remote asset management
 - Lock monitor
 - Disable OSD and USB/Video ports
 - Turn PC(s) on/off (*when connected by USB-C)
 - Manage display settings
 - Apply software updates
- Get notified when monitor is disconnected
- ThinkColour prompts IT managers to make remote firmware updates
- Information obtaining & monitoring for model name, connected status, running time
- Asset Report generation

**this function is supported by third party central management solutions such as Microsoft Endpoint Manager*

ThinkColour

2022 Lenovo Internal. All rights reserved.



Boost Efficiency

View all
monitors, apply
adjustments/
settings to
selected monitors

Adjust settings
as a batch
deployment

Enable
scheduled
settings

Use Cases

Everyday Employees



Advanced Users



IT Managers



Everyday employees

- Use monitor as hub for **extension** to other devices
- Layout windows for **multi-tasking**
- Manage **multiple** screens
- Make **quick adjustments** via mouse
- **Smart Power** & device charging when connected via USB-C
- Rotate screen for **different usage scenarios**
- **Maintain eye health** after prolonged screen time



Designer / Editor Advanced Users

- Color calibration and **customization** for visual or creative applications
- **Collaboration** between multiple sources, PiP/PbP
- Store **personalized** settings for easy access
- Update with latest features



IT Managers

- Information obtaining and monitoring
- Asset report generating
- **Adjust** monitor settings or deploy new firmware as a batch
- Enable scheduled settings
- **Remotely** lock or disable monitors/ports



thanks

ThinkColour

2022 Lenovo Internal. All rights reserved.

Smarter
technology
for all

Lenovo